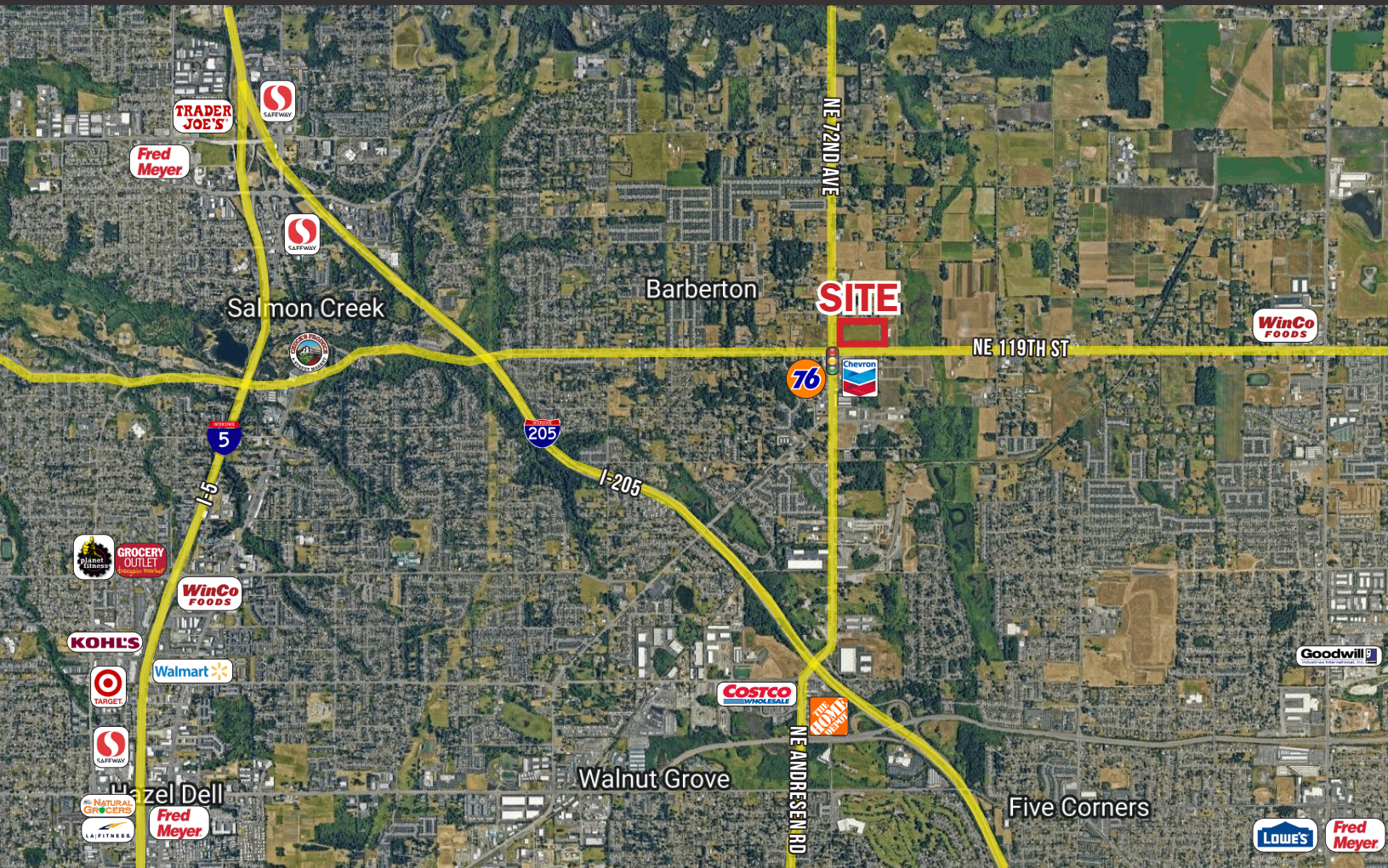


NOW LEASING > NEW SHOPPING CENTER

# GLENWOOD MARKETPLACE

## VANCOUVER, WASHINGTON



### LOCATION

NE 119th St & 72nd Ave  
Vancouver, WA

### AVAILABLE SPACE

Anchor, pad & restaurant/retail shops

### RENTAL RATE

Call for details

### TRAFFIC COUNTS

NE 72nd Ave – 17,636 ADT ('22)  
NE 119th St – 9,898 ADT ('22)

### HIGHLIGHTS

- New anchor, pad, restaurant and retail shop space opportunities.
- Positioned at a signalized intersection with full movement access into the center from both NE 119th St & NE 72nd Ave.
- Located within close proximity to the Padden Pkwy interchange at I-205.
- Growing trade area with new single family and multi-family residential developments.

### ANCHORS NEARBY



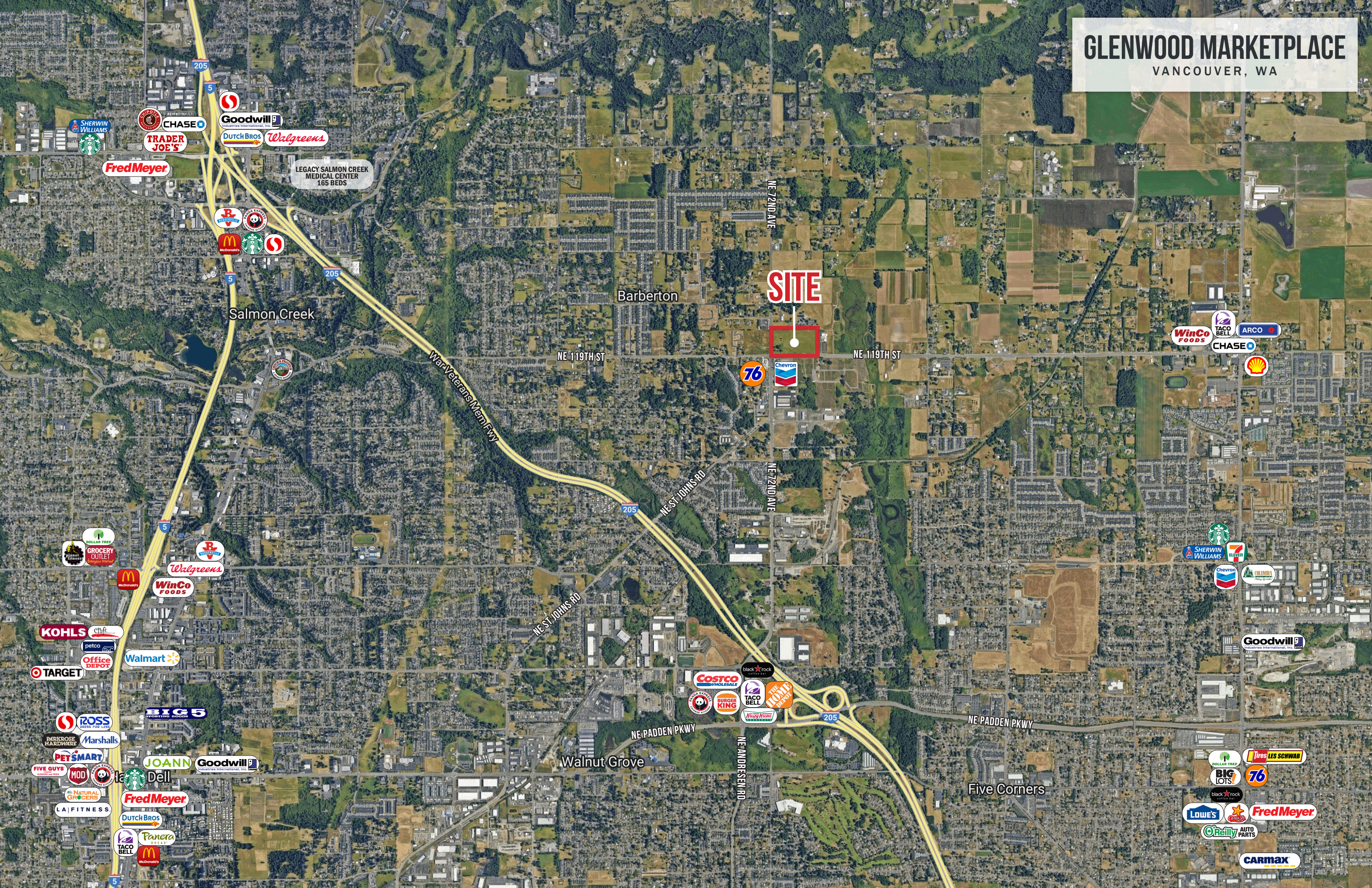
COMMERCIAL  
REALTY ADVISORS  
NORTHWEST LLC

Jeff Olson 503.957.1452 | jeff@cra-nw.com  
Kelli Maks 503.680.3765 | kelli@cra-nw.com

503.274.0211  
www.cra-nw.com

# GLENWOOD MARKETPLACE

VANCOUVER, WA



**SITE**

Barberton

Salmon Creek

NE 119TH ST

NE 119TH ST

NE ST JOHNS RD

NE 72ND AVE

NE PADDEN PKWY

Walnut Grove

NE ANDRESEN RD

NE PADDEN PKWY

Five Corners

LEGACY SALMON CREEK MEDICAL CENTER 165 BEDS

CHASE  
Goodwill  
Dutch Bros  
Walgreens

Fred Meyer

McDonald's  
Starbucks  
SHERWIN WILLIAMS

WinCo Foods  
TACO BELL  
ARCO  
CHASE

76  
Chevron

Starbucks  
SHERWIN WILLIAMS  
7 ELEVEN

DOLLAR TREE  
GROCERY OUTLET  
Walgreens  
WinCo Foods

KOHL'S  
petco  
Office DEPOT  
Walmart

BIG 5  
ROSS  
Marshall's

PET SMART  
FIVE GUYS  
MODI  
JOANN  
Goodwill  
Dell  
Fred Meyer  
Dutch Bros  
Panera

Goodwill

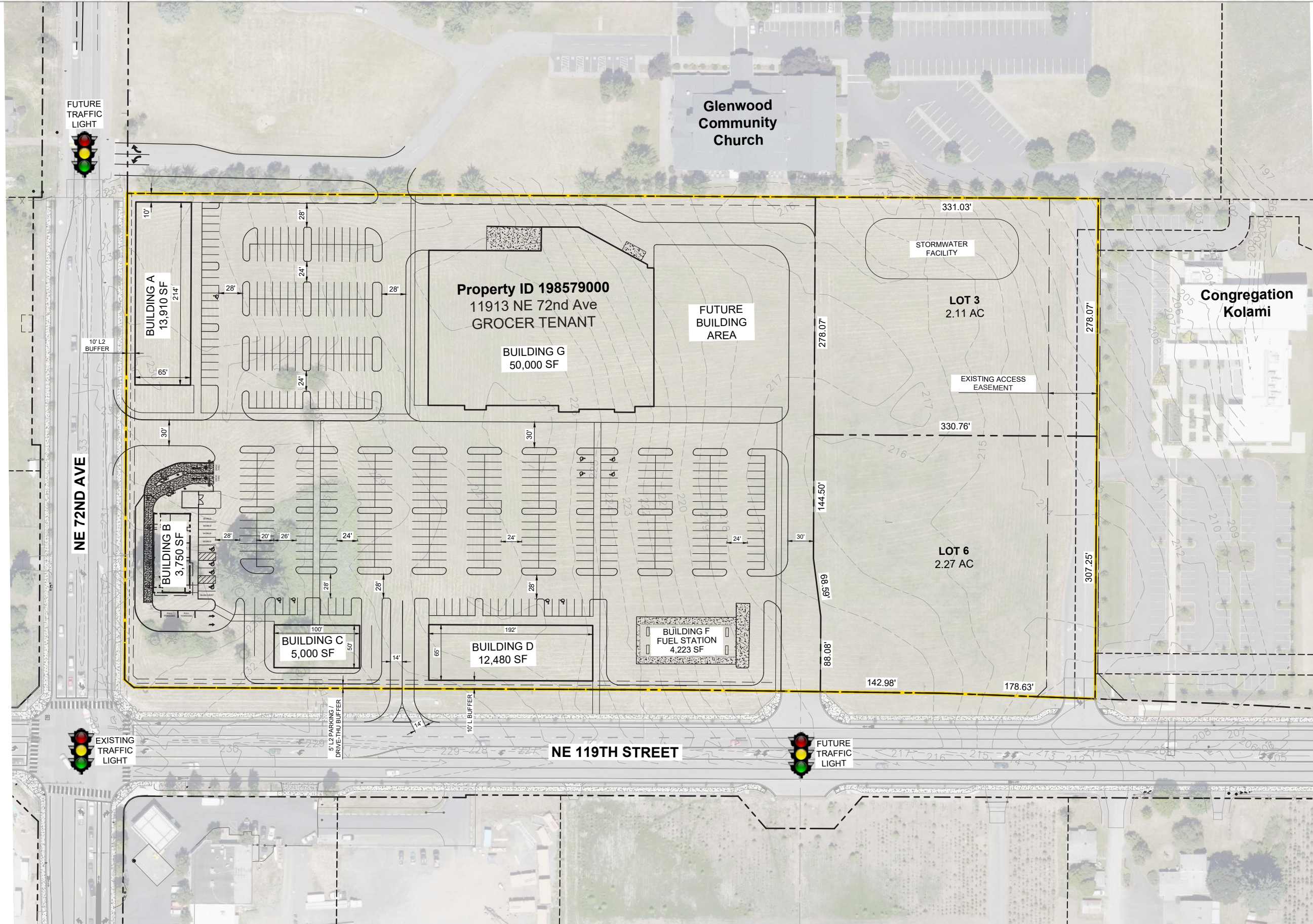
Costco  
black rock  
BURGER KING  
TACO BELL  
THE HOME DEPOT  
Krispy Kreme

DOLLAR TREE  
Tires LES SCHWAB  
BIG LOTS  
76  
black rock  
LOWE'S  
Fred Meyer  
O'Reilly AUTO PARTS

CARMAX

# CONCEPTUAL SITE PLAN

# GLENWOOD MARKETPLACE NE 119TH ST & NE 72ND AVE VANCOUVER, WA



# DEMOGRAPHIC SUMMARY

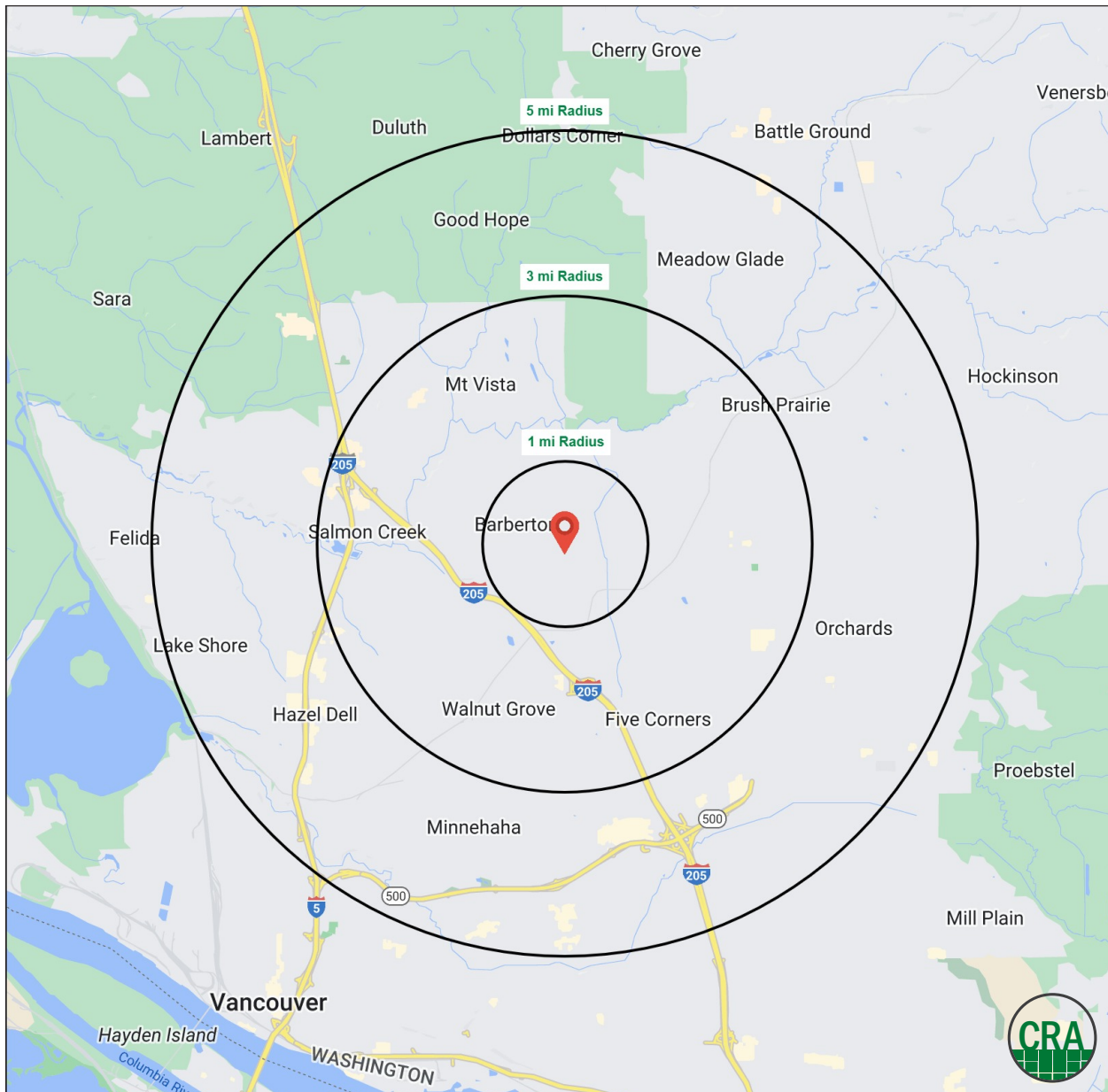
# GLENWOOD MARKETPLACE

VANCOUVER, WA

Source: Regis - SitesUSA (2024)	1 MILE	3 MILE	5 MILE
Estimated Population 2024	5,311	69,034	214,077
Projected Population 2029	5,570	71,800	222,407
Average HH Income	\$144,552	\$136,129	\$123,752
Median HH Income	\$119,520	\$101,467	\$95,715
Median Home Value	\$562,658	\$517,380	\$501,568
Daytime Demographics 16+	4,392	55,675	172,248
Some College or Higher	67.8%	68.9%	66.8%

**\$144,552**  
Average Household Income  
1 MILE RADIUS

**41.1**  
Median Age  
1 MILE RADIUS



## Summary Profile

2010-2020 Census, 2024 Estimates with 2029 Projections  
 Calculated using Weighted Block Centroid from Block Groups



Lat/Lon: 45.7082/-122.5988

<b>NE 119th St &amp; NE 72nd Ave</b> <b>Vancouver, WA 98686</b>	<b>1 mi radius</b>	<b>3 mi radius</b>	<b>5 mi radius</b>
<b>Population</b>			
2024 Estimated Population	5,311	69,034	214,077
2029 Projected Population	5,570	71,800	222,407
2020 Census Population	5,081	66,802	205,399
2010 Census Population	2,903	52,056	170,603
Projected Annual Growth 2024 to 2029	1.0%	0.8%	0.8%
Historical Annual Growth 2010 to 2024	5.9%	2.3%	1.8%
2024 Median Age	41.1	38.2	37.7
<b>Households</b>			
2024 Estimated Households	2,078	25,751	81,815
2029 Projected Households	2,195	27,060	85,704
2020 Census Households	1,924	23,965	76,461
2010 Census Households	1,052	18,429	63,509
Projected Annual Growth 2024 to 2029	1.1%	1.0%	1.0%
Historical Annual Growth 2010 to 2024	7.0%	2.8%	2.1%
<b>Race and Ethnicity</b>			
2024 Estimated White	81.1%	77.2%	75.9%
2024 Estimated Black or African American	2.1%	2.8%	3.3%
2024 Estimated Asian or Pacific Islander	6.4%	7.2%	6.6%
2024 Estimated American Indian or Native Alaskan	0.6%	0.7%	0.8%
2024 Estimated Other Races	9.8%	12.0%	13.4%
2024 Estimated Hispanic	8.8%	10.8%	12.3%
<b>Income</b>			
2024 Estimated Average Household Income	\$144,552	\$136,129	\$123,752
2024 Estimated Median Household Income	\$119,520	\$101,467	\$95,715
2024 Estimated Per Capita Income	\$56,610	\$50,916	\$47,413
<b>Education (Age 25+)</b>			
2024 Estimated Elementary (Grade Level 0 to 8)	0.6%	1.9%	2.8%
2024 Estimated Some High School (Grade Level 9 to 11)	1.2%	4.1%	4.9%
2024 Estimated High School Graduate	30.4%	25.0%	25.5%
2024 Estimated Some College	25.7%	25.5%	24.9%
2024 Estimated Associates Degree Only	13.4%	11.7%	11.4%
2024 Estimated Bachelors Degree Only	17.1%	20.8%	19.6%
2024 Estimated Graduate Degree	11.6%	10.9%	10.9%
<b>Business</b>			
2024 Estimated Total Businesses	133	2,502	8,122
2024 Estimated Total Employees	721	17,245	58,253
2024 Estimated Employee Population per Business	5.4	6.9	7.2
2024 Estimated Residential Population per Business	40.0	27.6	26.4

©2024, Sites USA, Chandler, Arizona, 480-491-1112 Demographic Source: Applied Geographic Solutions 5/2024, TIGER Geography - RS1

This report was produced using data from private and government sources deemed to be reliable. The information herein is provided without representation or warranty.

*For more information, please contact:*

**JEFF OLSON** 503.957.1452 | [jeff@cra-nw.com](mailto:jeff@cra-nw.com)

**KELLI MAKS** 503.680.3765 | [kelli@cra-nw.com](mailto:kelli@cra-nw.com)



KNOWLEDGE

RELATIONSHIPS

EXPERIENCE



**COMMERCIAL  
REALTY ADVISORS  
NORTHWEST LLC**

*Licensed brokers in Oregon & Washington*

 15350 SW Sequoia Parkway, Suite 198 • Portland, Oregon 97224



[www.cra-nw.com](http://www.cra-nw.com)



503.274.0211

The information herein has been obtained from sources we deem reliable. We do not, however, guarantee its accuracy. All information should be verified prior to purchase/leasing. View the Real Estate Agency Pamphlet by visiting our website, [www.cra-nw.com/home/agency-disclosure.html](http://www.cra-nw.com/home/agency-disclosure.html). CRA PRINTS WITH 30% POST-CONSUMER, RECYCLED-CONTENT MATERIAL.